

CR6

CR6 Pro



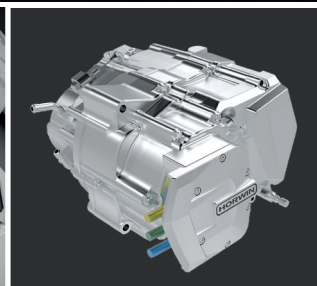
LED Headlights



Lithium Ion Battery



Smart Controlling Unit



HORWIN Electric Motor



CBS Braking System

Start into a new era of E-Mobility



www.horwin.eu/cr6

CR6

Electric center motor
permanent magnet synchronous motors

95 km/h

Max. Speed

53 Ah

Battery

120 km

Max. Range

CR6 Pro

Electric center motor
with 5 gear manual transmission

110 km/h

Max. Speed

60 Ah

Battery

142 km

Max. Range



●●● **CR6**



● **CR6 Pro**

**Appealing design,
latest e-technology**

**Center engine with
5-speed gear shift**

		CR6	CR6 Pro
ENGINE	Max. power	6.2kW	10.1kW
	Motor type	Electric center motor permanent magnet synchronous motors	Electric center motor permanent magnet synchronous motors with 5 GEAR manual transmission
	Manufacturer	HORWIN	HORWIN
	Power management	Field Oriented Control (FOC)	Field Oriented Control (FOC)
	Max. torque	260Nm	260 Nm
	Max. slope	abt. 17° at drive off	abt. 17° at drive off
	Acceleration	0-60 km/h in 6 sec	0-60 km/h in 6 sec
	Max. speed	95 km/h	110 km/h
BRAKE SYSTEM	CBS Disc Brake	for front and rear	for front and rear
FRAME	Frame	Aluminum-Magnesium Alloy	Aluminum-Magnesium Alloy
MEASUREMENTS	Wheelbase	1,395 mm	1,395 mm
	Length	2,040 mm	2,040 mm
	Width	770 mm	770 mm
	Height	1,120 mm	1,120 mm
	Seat height	870 mm	870 mm
	Ground clearance	165 mm	165 mm
	Net weight	107 kg (without battery)	112 kg (without battery)
	Front wheel	100/80-17 CST M/C 52S E-mark	100/80-17 CST M/C 52S E-mark
	Rear wheel	120/80-17 CST M/C 61S E-mark	120/80-17 CST M/C 61S E-mark
	Seats	2	2
	Technically permissible maximum laden mass	304 kg	310 kg
BATTERY	Battery type	Lithium Ion	Lithium Ion
	Power cells	Panasonic 18650	Panasonic 18650
	Voltage	72V	72V
	Capacity	53Ah	60Ah
	Max. range	120 km (according to EEC test method)	142 km (according to EEC test method)
	Charging time	3 h 0-80 %	3 h 0-80 %
	Charging current	220V/15A	220V/20A
FEATURES	Lights	LED (front, rear, flashing)	LED (front, rear, flashing)
	Display	Round Classical LCD, Automatic brightness adjustment	Round Classical LCD, Automatic brightness adjustment
	Theft warning system	Yes, electronic	Yes, electronic
	Keyless Go	Yes	Yes

European Headquarters
Kammersdorf 173 | 2033 Kammersdorf
Tel.: +43 2953 2325
E-mail: info@horwin.eu
www.horwin.eu

HORWIN Headquarters
Building 1 | No. 5 Chuangzhi Road
Tianning District | Changzhou | Jiangsu | China
Tel.: +86 519 80585808 | E-mail: horwin@horwinglobal.com
www.horwinglobal.com

